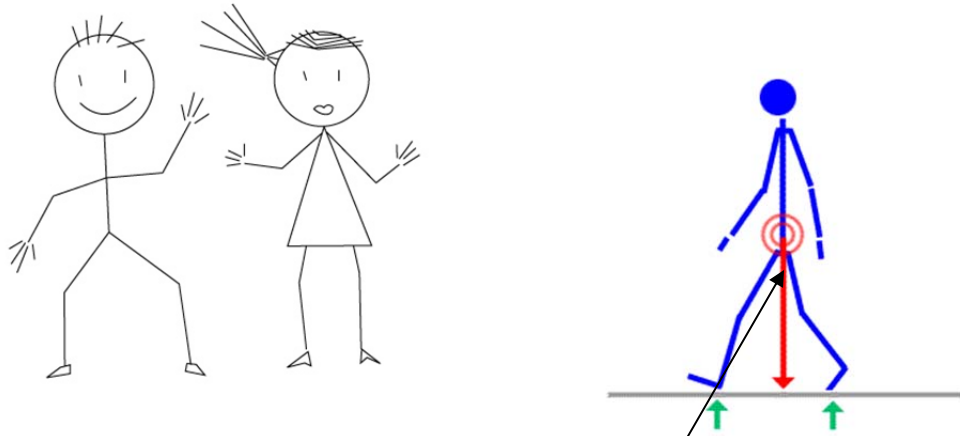


HOW TO GET AN INSIDE LEG MEASUREMENT



TO GET THE RIGHT SIZED TRIKE WE NEED AN INSIDE LEG MEASUREMENT, TO GET THIS MEASUREMENT, YOU PUT A PHONE BOOK FIRMLY INTO THE RIDERS CROTCH, THEN MEASURE FROM THE TOP OF THE PHONE BOOK TO THE FLOOR WITH THEIR SHOES ON, LEGS STRAIGHT.

